

## **Hi Lo Duo 500/600- Wall to Floor 8940-500/8940-750**

**-Maximum Weight Capacity 80kg**

**-Maximum Screen Size 86in (8940-500), 98in (8940-750)**

### **Product Description**

The Hi-Lo Duo wall to floor mount is an electrically powered height adjustable stand for the mounting of large format and touchscreen displays.

### **Safety Features**

An Anti-collision sensor is installed as standard on this product. If the sensor detects a collision during travel the lift will immediately stop and reverse a short distance in the opposite direction.

The 8940-750 also features a piezo anti-squeeze device which will stop and reverse the lift if an obstruction is detected.

### **Packaging and Shipping**

The product will be supplied flat packed in boxes, banded or wrapped to a pallet. To unpack, remove any banding or wrapping from the pallet. The cardboard packaging can then be opened and the components removed.

### **Maintenance Instructions**

There are no user maintenance or adjustment points on this product. Simply clean dust and dirt from the outside of the unit and inspect for damage or breaks. Cleaners and disinfectants must not be highly alkaline or acidic.

The user should visually check the product and its electrical cables for signs of damage, wear or misuse before using the product.

In addition, every three months the product should be inspected for damage, wear and loose parts or fixings. If issues are found, the user should report this to the manufacturer for advice and the product placed out of commission until the issue is resolved.

Incidences of misuse or damage must be reported immediately and the unit placed out of commission.

All repairs to the unit must only be carried out in Loxit's workshops.



## WARNING

### Safety instructions

Do not attempt to install or use this product until all the instructions and warnings have been read and understood. Please retain these instructions for future reference.

Failure to follow these instructions may result in accident leading to serious injury or death.

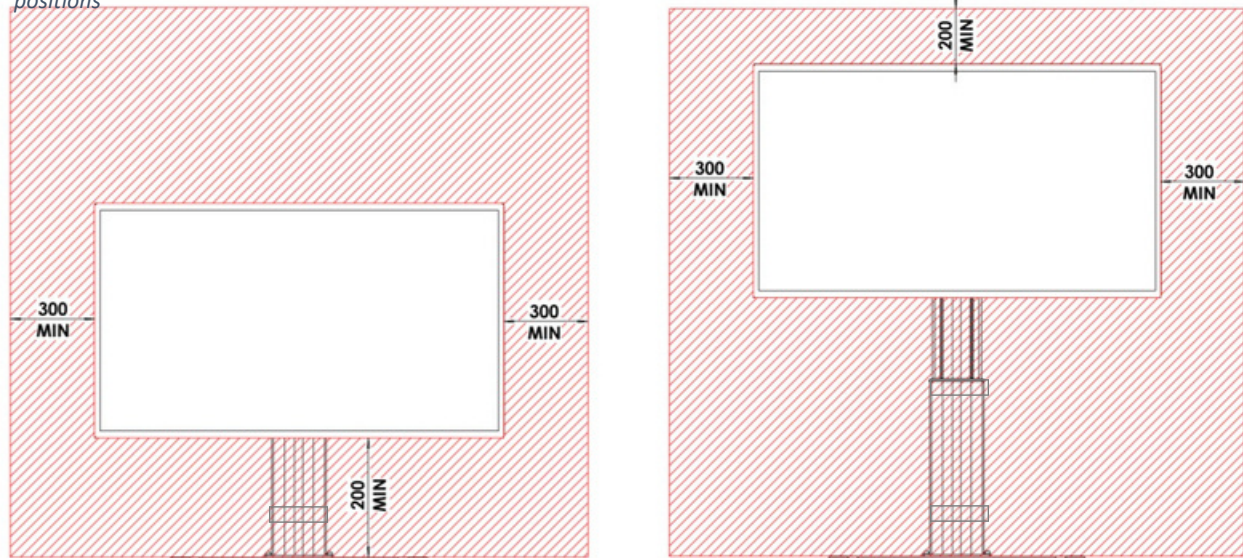
Failure to follow these instructions may result in the product being damaged or destroyed and the warranty voided.

Loxit Products Ltd is not responsible for injury or damage caused by improper installation, improper usage or failure to follow the instructions.

- Never exceed the maximum weight and/or screen size indicated. The use of equipment exceeding the maximum weight and/or screen size may cause instability and/or product failure.
- The floor surface the product is used on must be hard, flat and capable of safely bearing the weight of the product and any equipment installed on it.
- It is the responsibility of the installer to ensure that the wall and the fixings used are capable of safely bearing the load of the product and any equipment installed on it.
- Hitting, pushing/pulling or climbing on the product may result in damage and/or failure of the product and may cause the weakening and/or failure of the fixings used to secure the product to the wall.
- Only a competent adult should operate the product.
- Children must not be allowed to operate the product or have access to the controls.
- To prevent bodily injury, keep hands and clothing away from moving parts when the product is in operation.
- Before installing the product or working with its connections, unplug the product from the mains power supply socket.
- The product must only be used indoors in a dry area and it must be ensured before use that the product is safe from liquid contact or spillage.
- Unplug the product IMMEDIATELY in the following conditions:
  - When the power cord or plug is damaged or frayed.
  - If liquid has spilled into the product.
  - If the product has been exposed to rain or water.
  - If the product exhibits a distinct change in performance, indicating a need for servicing.
- Do not place the product in places subject to extreme temperatures, for example near a radiator, or heating vent.
- The product has a sound level below 55 dB(A) in typical applications.
- Ensure any moving parts of the product are always kept clear of obstructions.
- A minimum clearance of 200mm is recommended between the screen\* and base/floor in the lowest position (see figure 1).
- There is also a minimum recommended clearance of 200mm between the top of the screen\* and the ceiling when the lift is in its highest position (see figure 1).

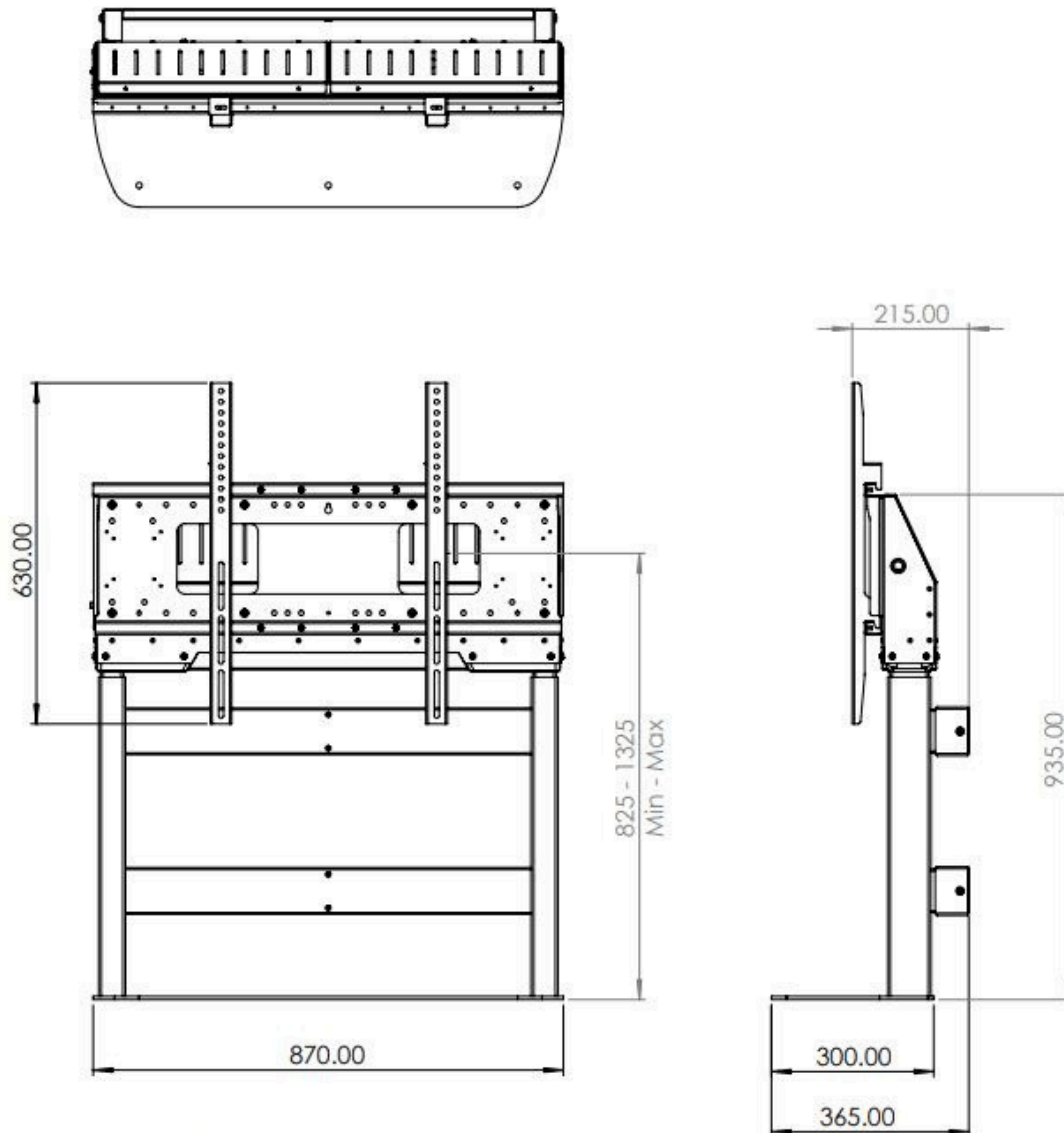
- \* Please note these minimum clearance recommendations also apply to any other equipment, accessories or shelves mounted to the stand.
- A minimum clearance of 300mm is recommended between any moving part of the lift and any potential obstructions to the front, rear or sides of the lift (see figure 1). This applies in the lowest and highest positions.

*Figure 1*  
*Minimum recommended clearances in raised and lowered positions*



## Specifications and dimensions

### Duo 500 Wall to Floor Mount – 8940-500

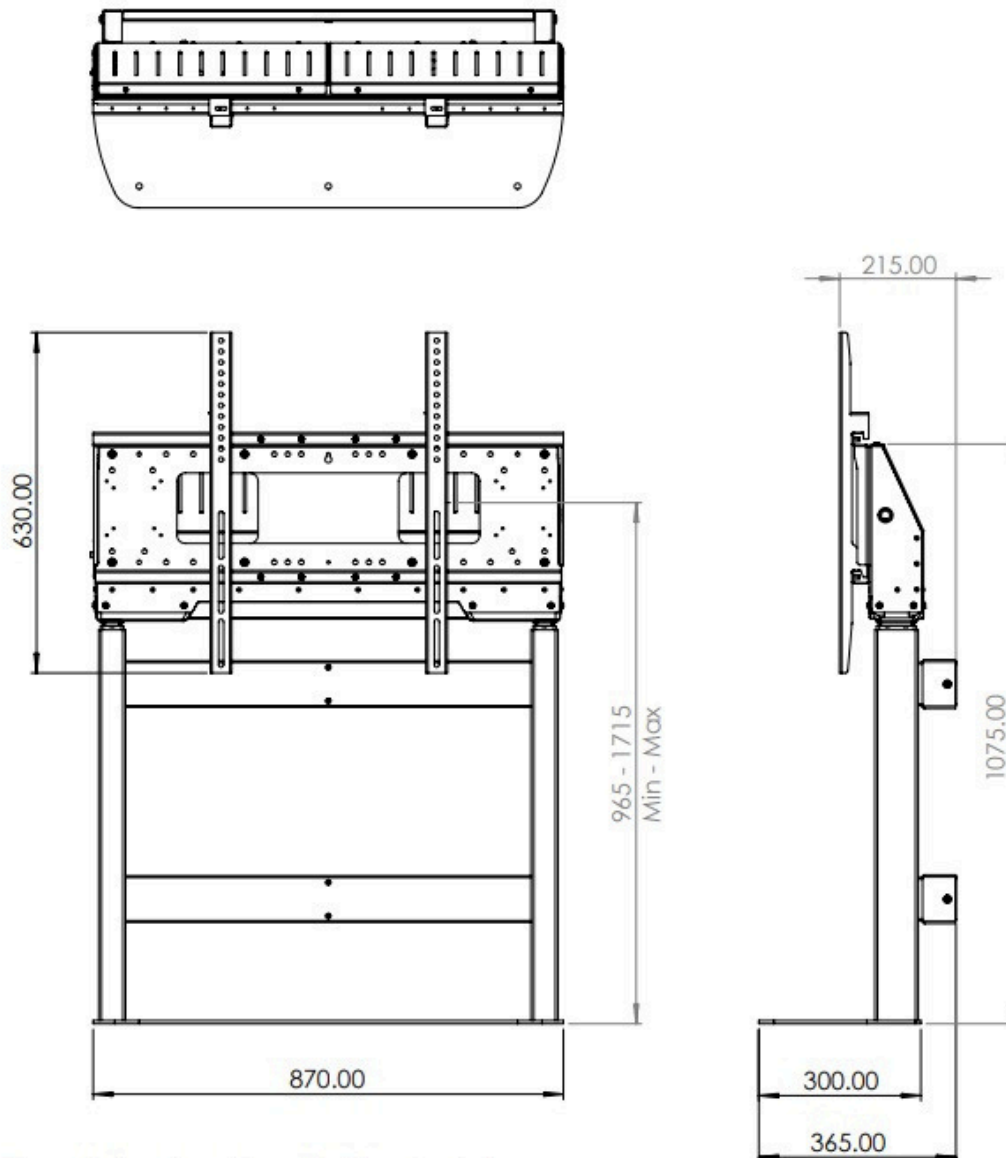


*\*Shown in lowest position with 40mm brackets*

#### SPECIFICATION:

- Max Capacity 80kg, suitable for screen between 42 and 86in.
- Suitable for VESA mounts 200, 300, 400, 500, 600, 700 and 800mm in width and between 100 and 600mm in height.
- 500mm Electric height adjustment, 825 - 1325mm height range to centre of mount.
- Anti-Collision sensor.
- Floor plate included as standard.
- Easy install and 60mm brackets as standard, 40/100mm standoff brackets available.
- 4 Gang UK extension included inside headbox.

## Duo 750 Wall to Floor Mount – 8940-750



*\*Shown in lowest position with 40mm brackets*

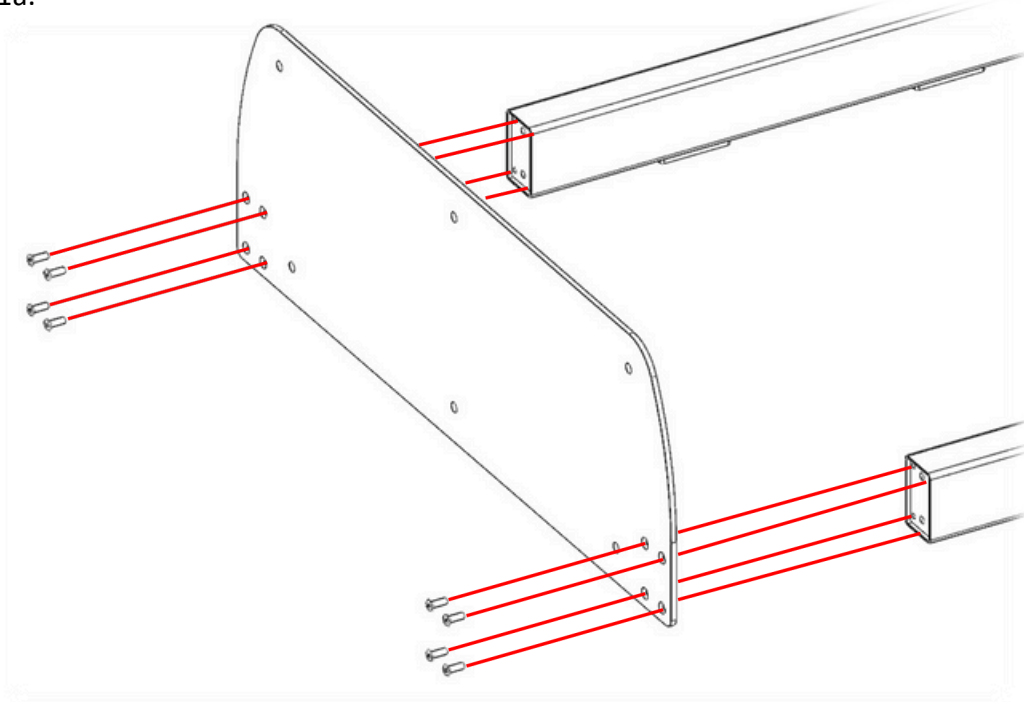
### SPECIFICATION:

- Max Capacity 80kg, suitable for screen between 42 and 86in.
- Suitable for VESA mounts 200, 300, 400, 500, 600, 700 and 800mm in width and between 100 and 600mm in height.
- 750mm Electric height adjustment, 965 - 1715mm height range to centre of mount.
- Anti-Collision sensor.
- Piezo Anti-Squeeze sensor.
- Floor plate included as standard.
- Easy install and 60mm brackets as standard, 40/100mm standoff brackets available.
- 4 Gang UK extension included inside headbox.



## Assembly Instructions

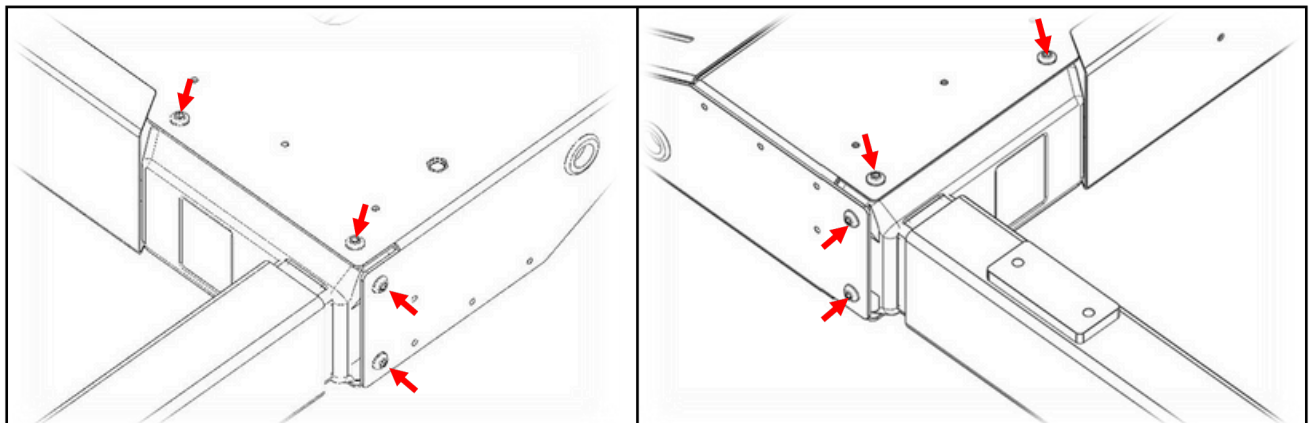
1. Fix the base plate to the legs using the M6x20mm countersunk screws provided.  
 If the motor columns do not align with the base plate **DO NOT** attempt to force the columns into position this may result in permanent damage. If columns will not align see step 1a.



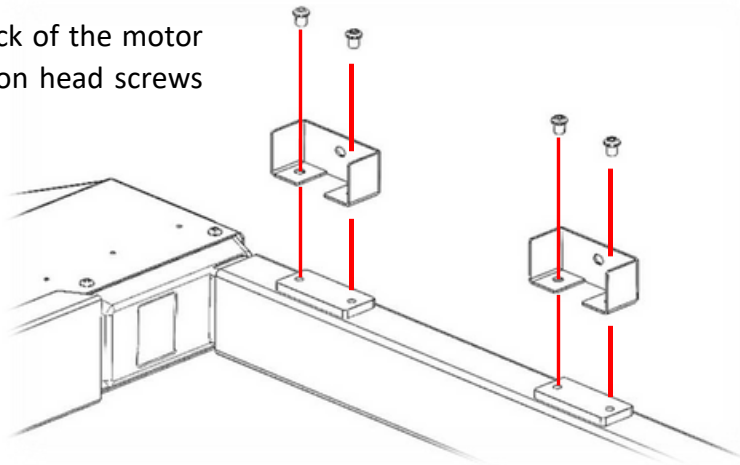
- 1a If the motor columns will not align with the base plate follow the steps below:

1. Loosen the fixings of both motor columns slightly (6 per, leg 12 in total).
2. Fix the base plate in place using the M6x20mm countersunk fixings provided.
3. When base plate is fixed in place, tighten the fixings of both motor columns (6 per, leg 12 in total).

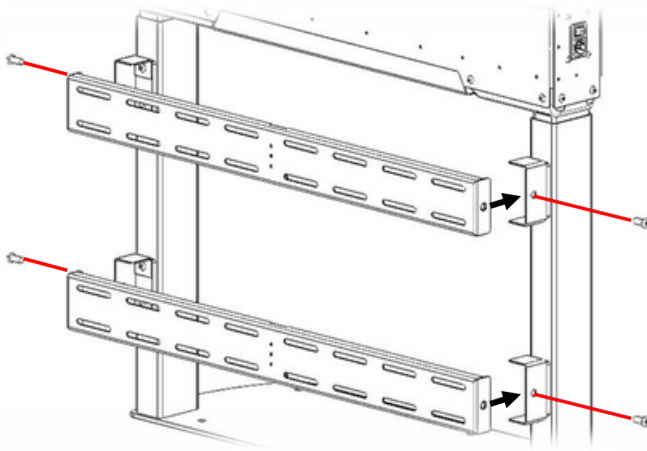
### *Motor column fixings*



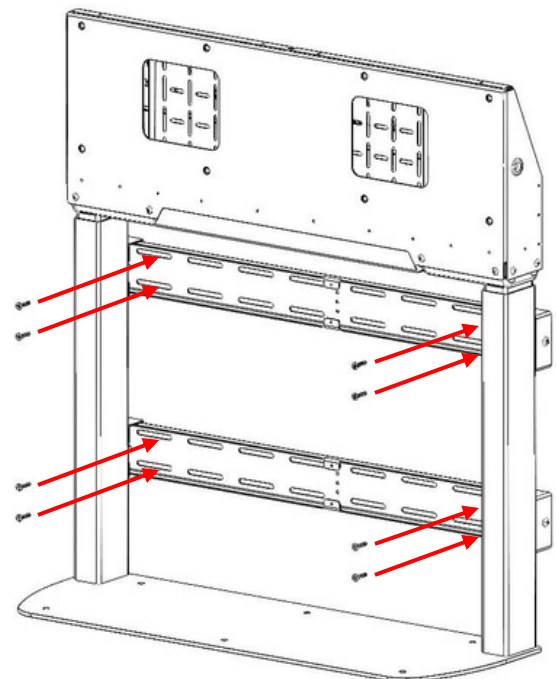
2. Fix the standoff brackets to the back of the motor columns using the M8x10mm button head screws provided.



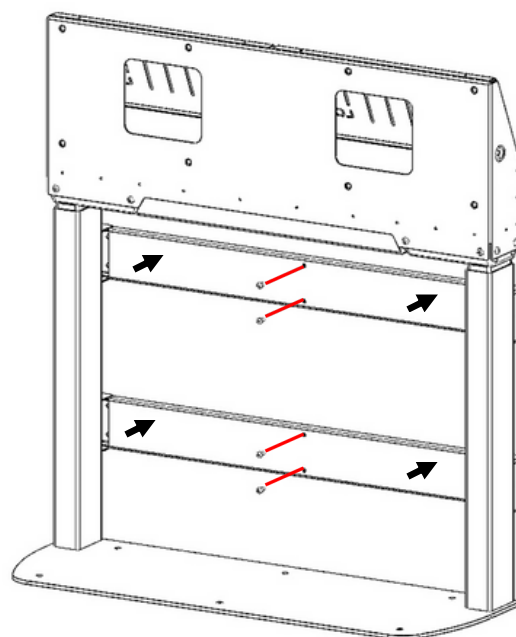
3. Fix the wall mounts to the standoff brackets using the M8x20mm screws provided.



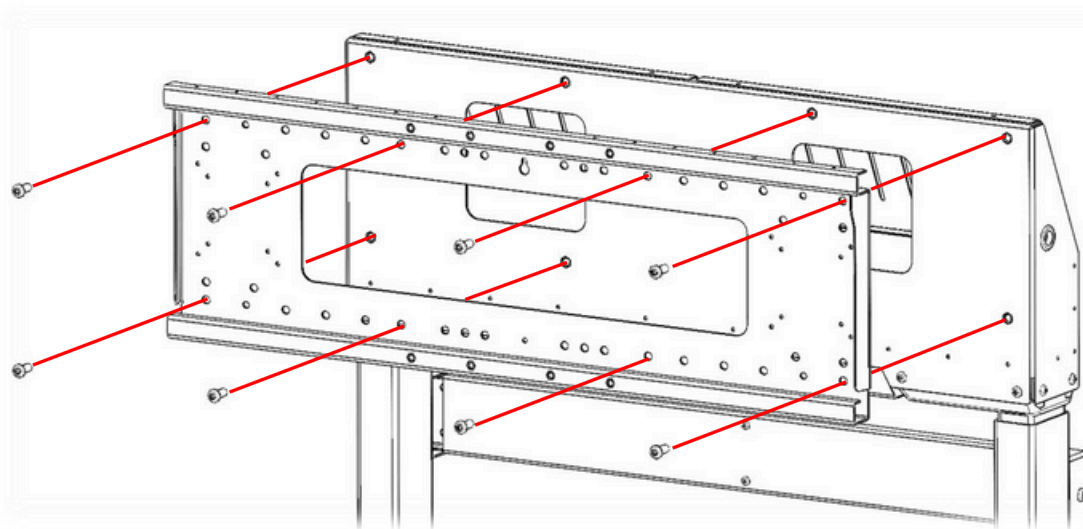
4. Move the lift against the wall where it is to be mounted. Fix the lift to the wall using fixings of an appropriate size and type for the wall and the expected load. Fixings must be spread over both brackets.



5. Fix the covers to the wall mounts using the M5 screws provided.



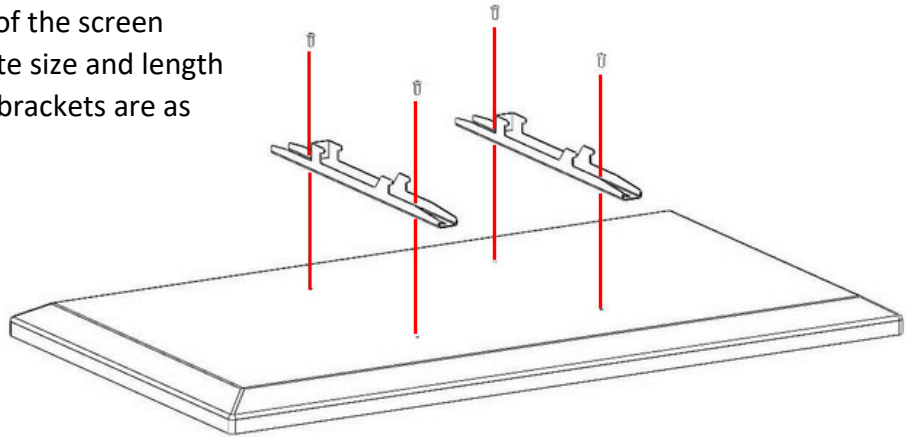
6. Fix the screen mount plate to the headbox using the eight of the M8x20mm screws provided.



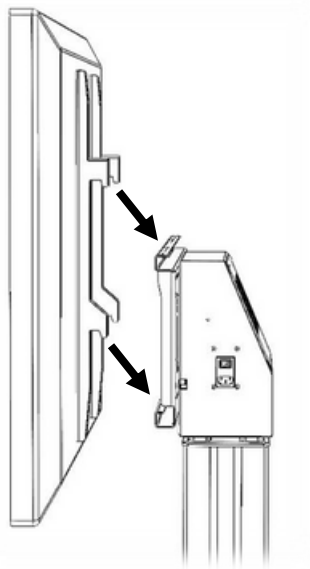


## Screen Installation

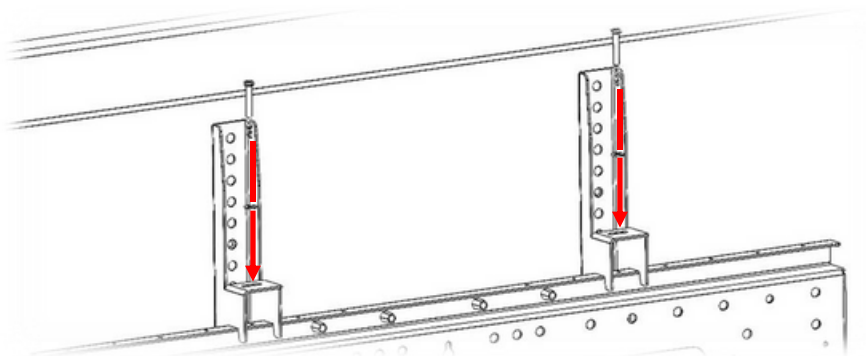
1. Fix the brackets to the back of the screen using fixings of an appropriate size and length for your screen. Ensure the brackets are as central as possible.



2. Hook the screen onto the mount rail.

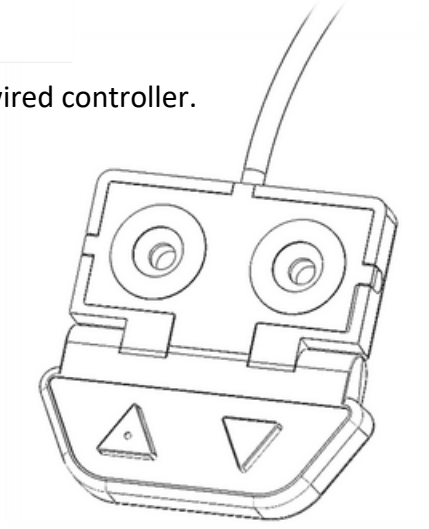


3. Secure the screen in place by fixing through the brackets into the mount plate, use the M5x50mm bolts and washers provided.

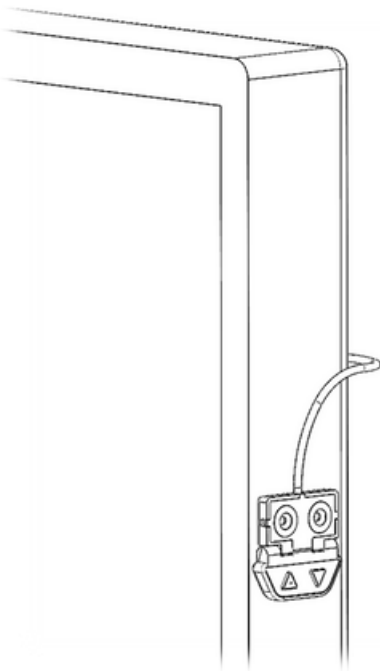


## Wired Controller

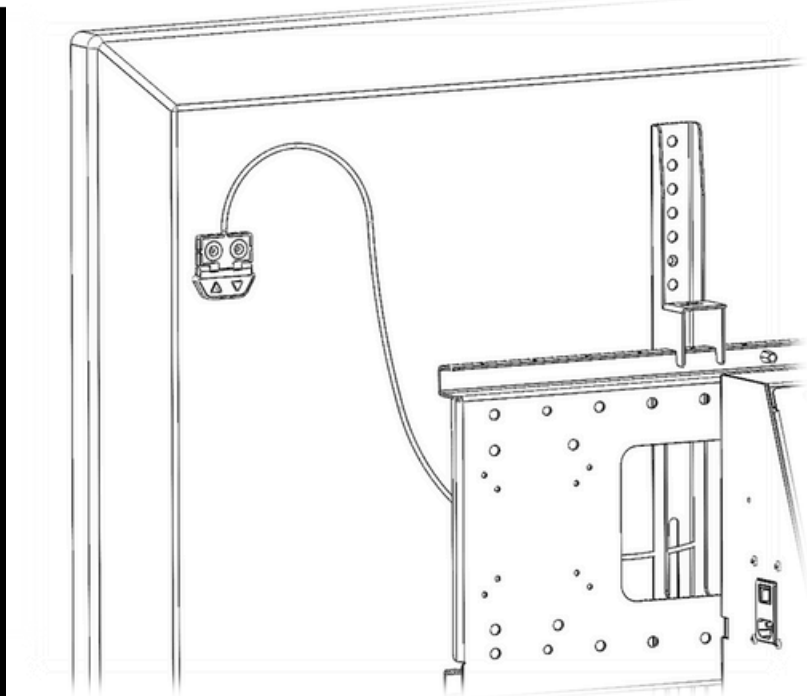
1. The Duo is provided with a wired controller.



2. The controller should be fixed to the side or back of the screen using the Velcro provided.  
*It is recommended to mount the control out of reach of children if possible.*



Side of screen



Back of screen

3. Once mounted any excess cable should be coiled and cable tied, to prevent it becoming entangled in the moving parts of the lift.

## Essential safety checks for first operation of the lift

1. For safe operation of the lift it is essential to verify that there is a sufficient clearance between the screen\* and the trolley base when in the lowest position.

A minimum clearance of 200mm is recommended between the screen\* and base/floor when the lift is in its lowest position.

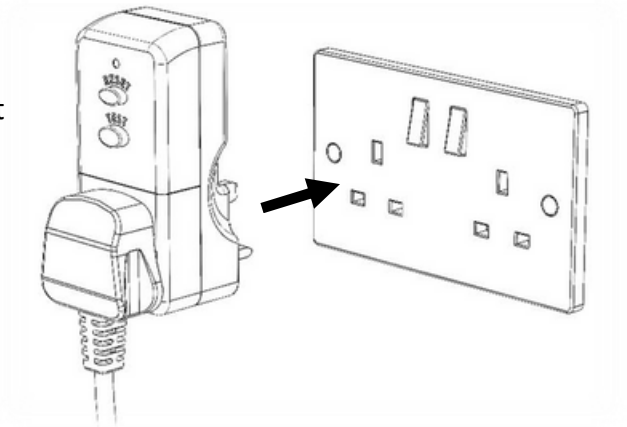


2. Before operating the lift for the first time check the area around the lift is free of obstructions which the moving part of the lift may collide with.
3. Pressing the buttons of the controller drives the lift upwards and downwards. The buttons on the controller indicate the direction of travel.  
Using the controller to drive the lift downwards, closely observe the clearance between the bottom of the screen\* and the base/floor.  
If the clearance is not adequate to prevent the risk of collision or injury the lift must not be put into use. The minimum recommended clearance between the screen\* and the base/floor is 200mm.

*\*Please note this also applies to any other equipment, accessories or shelves mounted to the trolley.*

## Operating Instructions

1. Plug the lift into a mains socket using the cable and RCD provided. Ensure that there is sufficient length of free cable to allow the lift to move through its height range without pulling tight.



2. Before operating the lift check that the area surrounding the lift is free of obstructions that the lift may collide with in use.  
*The minimum recommended clearances are provided in the safety information at the beginning of these instructions.*

3. The lift is operated using the controller. Pressing the up button drives the lift upwards and pressing the down button down drives the lift downwards. The buttons on the control indicate the direction of travel. The operator must always be aware of potential obstructions when operating the lift.

