

# Bolton College

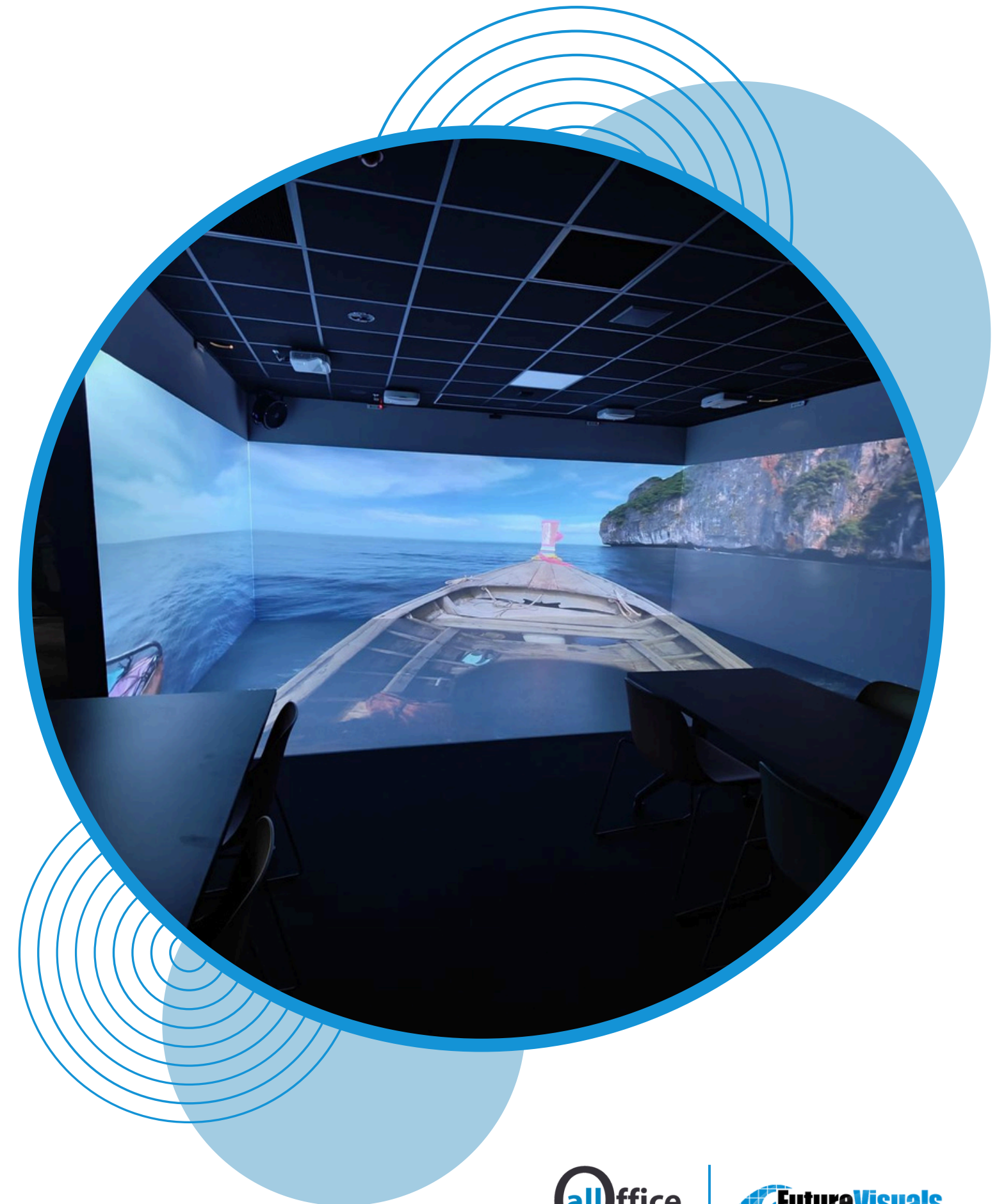
*Immersive Room*

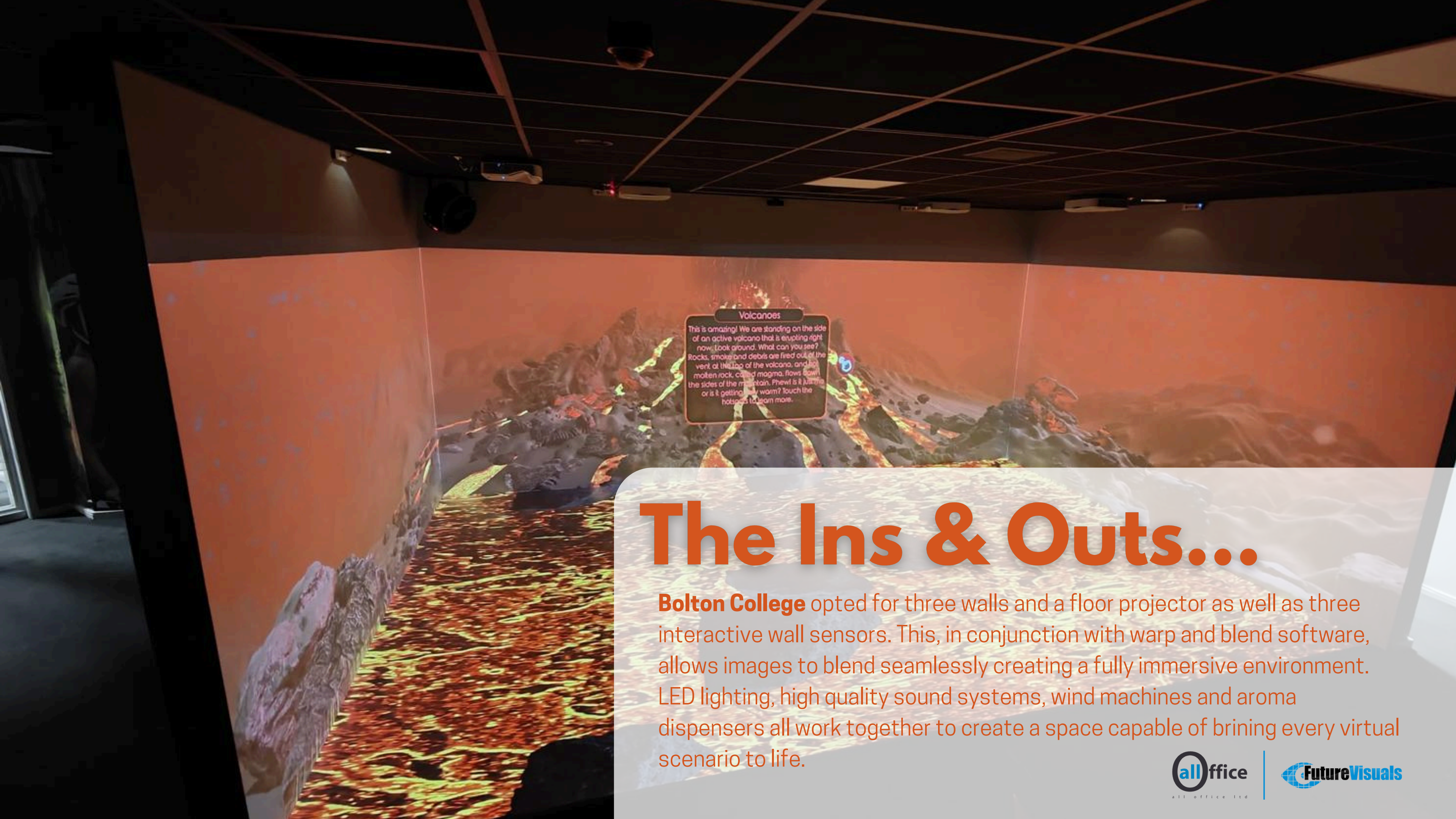
# Bolton College

**Bolton College** is a further-education provider based in the heart of Bolton whose aim is to be '*a centre of excellence in the usage of immersive spaces!*' Specialising in the highest quality vocational training, the college has always aimed to enhance the qualifications, skills and employability of every student. So, with a wide range of speciality courses available, the college wanted a space that not only utilises modern technology to engage both students and staff on a deeper level, but also a classroom that could be easily adapted to suit the individual needs of every course curriculum.

This is where our immersive classrooms came in.

Designed as a 'room within a room', the college opted for a three wall solution that utilises warp and blend technology to allow clear-cut projection onto the floor. Interactive wall sensors were then used to create a fully interactive, multi-sensory space that can be further brought to life through eye-catching virtual reality, high quality sound and lighting, and finally – smells that mimic the real world settings.





**Volcanoes**  
This is amazing! We are standing on the side of an active volcano that is erupting right now. Look around. What can you see? Rocks, smoke and debris are fired out of the vent at the top of the volcano, and hot molten rock, called magma, flows down the sides of the mountain. Phew! It is just as hot or is it getting any warmer? Touch the hotspots to learn more.

# The Ins & Outs...

**Bolton College** opted for three walls and a floor projector as well as three interactive wall sensors. This, in conjunction with warp and blend software, allows images to blend seamlessly creating a fully immersive environment. LED lighting, high quality sound systems, wind machines and aroma dispensers all work together to create a space capable of bringing every virtual scenario to life.

# What the room has been used for...



## Quizzes & Competitions

Bolton College have used their Immersive Classroom as a way of conducting formative assessments through quizzes and competitions. This allows teachers to further understand the needs of their students while students themselves are able to identify their own strengths and weaknesses in a fun, light-hearted assessment.



## Staff Training Sessions

The college has also utilised their immersive space for hands-on staff training. Through informative group activities and simulations of emergency situations, staff can practice responses and digest information easily in a controlled environment.



## Role Play

Bolton's law students turned their immersive classroom into a court room so they could play out an active criminal court case in an environment that felt entirely realistic.



## Wellbeing & Meditation Sessions

Immersive spaces make the most calming of environments, which is why Bolton College uses this room for wellbeing and meditations sessions. Through group meditation videos and calming nature scenes, students and teachers can relax and unwind as they watch the gentle ebb of water and a zephyr brush trees with content such as 'Jungle Butterfly'.

# Future uses for the room...



## Student Inductions

In the near future, the college plans on using their immersive space to conduct student inductions. This will allow the students to experience a virtual tour of their new campus, be virtually introduced to key tutors and personnel, and even participate in simulations that show the college's health and safety procedures.



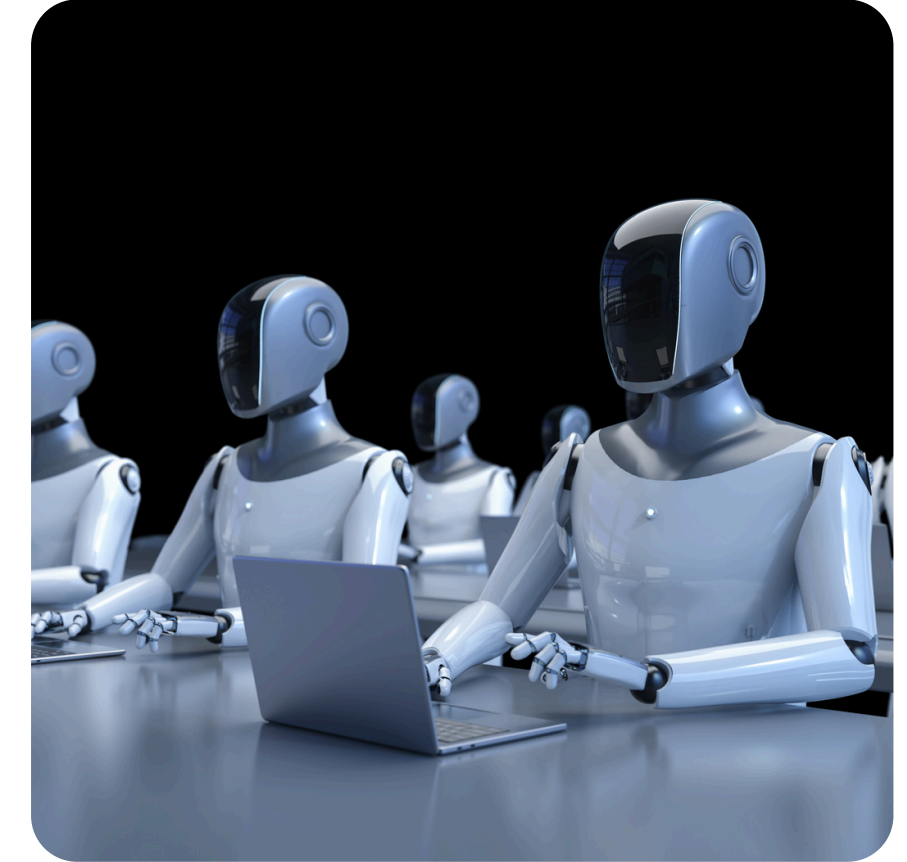
## Streaming E-Sports

The college also plans for their immersive room to be an epicentre for the streaming of E-Sports. This means students and staff members with a keen interest in competitive video gaming will be able to enjoy their breaks or time after college immersing themselves in the world of electronic sports.



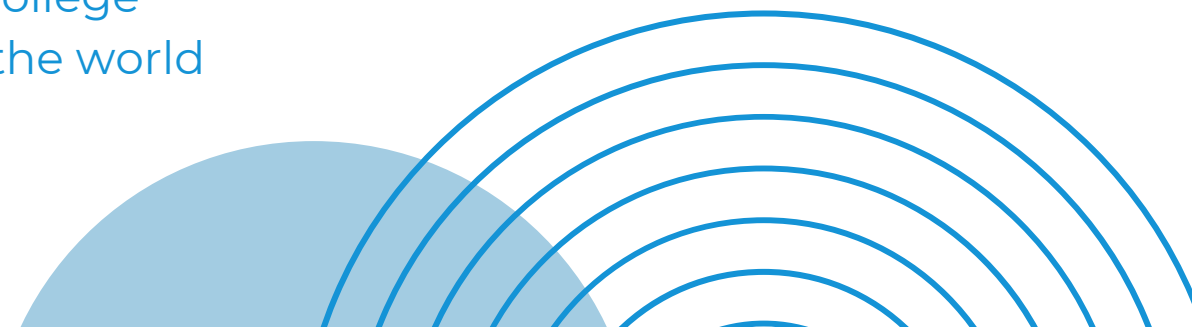
## Gallery for Student Exhibitions

Currently showing an end of year showcase, the college plans to continue using their immersive space as a gallery to showcase student exhibitions.



## Mixed Reality with AI Generated Content

In the future, Bolton College hopes to embrace AI generated content and adopt a mixed reality approach within their immersive space.





# Specialist On-Site Training

As part of our solution, we arranged specialist on-site training for Bolton College. During these training sessions, staff were taught how to use their cutting-edge immersive classroom, how to utilise wind and aroma machines, and of course, how to create their own content within the immersive studio.



The immersive room is set to become a powerful tool for teaching, training and transformation across the college.

It will be used by young people on study programmes and T levels, adult learners and apprentices from all industries. From high-pressure boardrooms to emergency response scenarios, it will bring industry environments into the classroom – enhancing learning through interactive experiences like group challenges, quizzes and simulated workspaces.

The space also supports CPD, wellbeing activities and learner enrichment, offering an engaging environment for collaboration, creativity and personal growth.

This project wouldn't have been possible without the incredible partnership and expertise of AllOfficeLTD and FutureVisuals. From the initial concept through to installation and delivery, they've been outstanding – creative, collaborative and completely committed to helping us achieve something truly transformative for staff and learners.



**Looking to invest in an  
Immersive Room?**

**Contact our friendly  
Sales team today!**



**0151 372 7766**



**info@futurevisuals.co.uk**

