

Specsheet

Prowise Touchscreen Ultra



The Prowise Touchscreen Ultra combines excellent user experience and specifications. All feedback from teachers and IT professionals comes together in the Prowise Touchscreen Ultra. From writing experience to software tools and from management to security. This spec sheet introduces you to all the highlights and, of course, you can also browse through all the specs in the overview.

On the Prowise Touchscreen Ultra you freely use our education software Prowise Presenter and the Mobile Device Management software package Prowise Screen Control to centrally manage your Prowise touchscreens remotely. The development of Prowise Presenter and Prowise Screen Control has been certified by the BSI, the global authority in the field of cyber security.



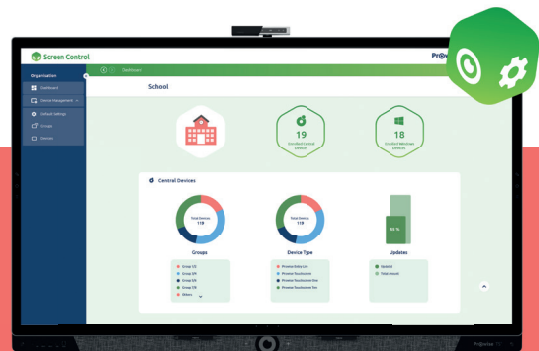
"So far, Prowise has been the only manufacturer of educational software that has received such a certification."

Source: www.bsi.bund.de



Education software Prowise Presenter

- ✓ Writing, erasing, typing
- ✓ Wallpapers, images, videos, 3D
- ✓ Interaction with devices
- ✓ Hundreds of educational practise tools
- ✓ Quiz module



MDM software Prowise Screen Control

- ✓ Pushing apps
- ✓ Installing updates
- ✓ Switching on and off remotely
- ✓ Safety settings
- ✓ Specially developed for Touchscreens

Breathtaking image and sound quality

Enjoy the incredible 4K visual experience and room-filling audio.

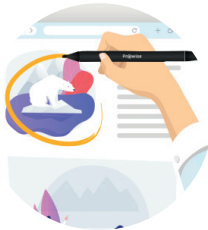
- ✓ 4K/Ultra HD IPS
- ✓ 178° viewing angle
- ✓ Optical Bondend Anti-Glare Pro
- ✓ Anti bacterial etched nano-texture glass
- ✓ 2.1 Audio Soundbar
- ✓ 6x wide-area microphones



Excellent writing experience

Pen to paper, smooth and precise

- ✓ 2 pens with front and back pen points
- ✓ 2 colors per pen
- ✓ palm recognition
- ✓ Windows Ink compatible
- ✓ 40 touchpoints
- ✓ Prowrite Pcap Technology
- ✓ Pen pick-up recognition



Annotate

Take notes on any website, PDF or input source.



Pick-up recognition

Grab a pen and you can directly open the writing software.



Palm recognition

Rest your palm on the screen while writing.

Effortless connection

Integrated USB-C ports

All the benefits of USB-C

Thanks to the USB-C ports, your Prowise touchscreen has a built-in docking station. You only need one cable for: Audio, Data, Video, Charging, Touch, Internet

- ✓ Powersupply (100W and 15W)
- ✓ Supported standards:
 - USB 3.2 gen 1
 - USB Touch
 - Displayport 1.2
- ✓ Internet (100 Mb/s)

Wireless

Screencasting

Share the screen from any device on the Prowise Touchscreen, even with several devices at once or mixed together. Fully wireless, in excellent quality, fast, secure by pin code, no additional costs or complicated installations.

- ✓ AirPlay - 4 in the mix
- ✓ Chromecast - 4 in the mix
- ✓ Reflect - 10 at a time with touchback function
- ✓ Miracast

Educational apps and tools



Indispensable apps

- ✔ Microsoft Teams
- ✔ Google Meet
- ✔ Skype
- ✔ Zoom
- ✔ Netflix
- ✔ Spotify
- ✔ Youtube

Classroom favorites

- ✔ Birthday cake
- ✔ Memory
- ✔ Mind map
- ✔ Flashcards
- ✔ Bus sums
- ✔ Line of numbers
- ✔ Group creator
- ✔ Name picker

Performance & Stability

Faster and more memory than ever

- ✔ Android 13.0
- ✔ Storage 64GB
- ✔ Memory 8GB

Wifi 6

- ✔ 250% faster than Wi-Fi 5
- ✔ No separate module
- ✔ Performance and stability



Performance & stability



android



8GB
Memory

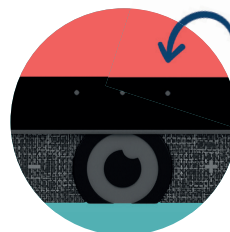


64GB
Storage



Wifi
6

Control in the classroom



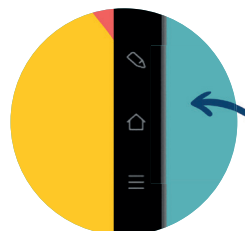
On-glass buttons

You link the three on-glass buttons to an action or programme yourself.



Prowise Magic Remote

With the optional Prowise Magic Remote you can click, point, magnify and spotlight content.



Menu

Quick access to most used menu items

Prowise Central, control your digital board without a computer or PC module

Prowise Central includes everything you need to get started with your digital board in the classroom right away. No complicated installation or configuration required.



Work quickly and efficiently



Launch your apps with one click

The Prowise Appstore only displays validated and secure apps, without adverts or inappropriate content.



Access to your files, whenever and wherever

It's easy to log into your Prowise account on your touchscreen, giving you access to all your linked cloud accounts.



Display other screens in the classroom

Via Airplay, Chromecast or Miracast, you can screencast up to 4 screens from pupil devices to your touchscreen at the same time.



Prefer Google's operating system?

Thanks to Prowise's Google EDLA certification, you can choose how to work on your digital board: either with the custom-made Prowise Central operating system, or with the Google-certified Android environment, which includes access to the Google Play Store™.



Google EDLA

You just need to log into your Google account, and all your favorite Google apps are at your disposal. If you work on your personal device with the same account, you'll find your work immediately on the desktop of your Prowise touchscreen.

TouchGREEN

Your Prowise touchscreen.
Our responsibility.



Longer life span

We are so convinced with the lifespan of our screens that we now offer 7 years warranty by default.



You determine the power consumption

Thanks to the three power modes, you can determine the power consumption of your Prowise touchscreen yourself.



Anti-bacteria

The certified antibacterial glass plate kills 99% of the most common bacteria.

Extra options

Prowise MOVE-camera

Distance learning

- ✓ Webcam
- ✓ Teams, Meet, Skype, Zoom
- ✓ 2.1 Soundbar and 6 microphones



Learning through motion with MOVE app

- ✓ Play games without touching the Prowise touchscreen
- ✓ Improves the learning outcomes
- ✓ Is in line with the children's experiences

Prowise PC-module

- ✓ Windows 11 Professional
- ✓ Without external cables
- ✓ Intel vPro Technology (optional)
- ✓ Powerful Intel processor
- ✓ Intel® Iris® XeGraphics
- ✓ Lightning-fast performance



Prowise iPro Liftsystem

- ✓ Ideal height and location
- ✓ Safe and energy efficient
- ✓ Only one cable
- ✓ Turn the screen into a touch table
- ✓ Patented brake system
- ✓ CE and GS certified



Prowise iPro Whiteboard Extension Kit

- ✓ Four-panel whiteboard
- ✓ High-quality protective layer
- ✓ Magnetic
- ✓ Five years Full warranty



Technical specifications

PW.1.18055.0001, PW.1.18065.0001, PW.1.18075.0001, PW.1.18086.0001

Display	All screen sizes
Bezel colour	Sandblasted aluminium (grey)
Dimensions	55, 65, 75 en 86 inch
Panel type	Ultra HD LCD – IPS
Resolution	3840 x 2160 @ 60 Hz
Glass panel	Anti-reflection Nano etched technology with antibacterial
Display bonding technology	Optical bonding technology
Hardness glass	Mohs 7 (9H)
Aspect ratio	16:9
Contrast ratio	1200:1 (typ.)
Dynamic contrast ratio	5000:1
Brightness	450 cd/m2 typ
Colour depth	10 Bit (1.07B)
Viewing angle	178°
Lifespan	50.000 hours

Touch-Type	
Type	Prowrite Pcap Technology
Multi-Touch	Yes (40 Points)
Multi-Color Writing	Writing with 2 pens in 2 colours
Touch precisie	1,5 mm
Auto-Calibration	Yes
Resistant to sunlight	Yes
Supporting OS	Windows 8.1/10/11 / Linux / Mac OS X / Android
Pen-on-paper writing experience	Yes

Touch refresh rate	≥100Hz
Pen dock	Yes, with pen pick-up recognition

Sound	
Speakers	2.1 sound (2 speakers + 1 subwoofer)
Front Speakers	2 x 20W
Subwoofer	1 x 20W
Total power amplifiers	95W

Microphone	
Type	Wide-area microfoons
Number of microphones	6
Auto switch (Windows/Central)	Yes
Can be switched off	Yes

Prowrite Pcap Technology	
Number of pens	2
Writing in multiple colours simultaneously	Yes, in two colours
Writing in multiple thicknesses	Yes
Smart object selection	Yes
Palm recognition	Yes

Prowise Central	
CPU	High-End (Quad-Core A73 + Quad-Core A53)
GPU	High-End (Octa-core Mali G52)
Supported operating systems	Prowise Central and Google EDLA
Android version	Android 13.0

Storage	64GB (Optional 128GB)
Memory	8GB
Over-the-Air Updates (OTA)	Yes (5 years of support)
NFC reader/writer	Yes
Motion sensors	Yes (2 PIR sensors)
Ambient light sensor	Yes

Accessories	
Camera bracket	Yes, with screw
Number of pens	2 passive pens
Extra pen points	Yes
Remote control	Yes, including Batteries
Wi-Fi antennas	2x
NFC Cards	Optional
Prowise Magic Remote	Optional with pointer, mouse, magnify and spotlight function
Wiper	Optional
100 x 100 Vesa mount	Integrated

Connections	
HDMI Out 2.1 (4K@60Hz)	1x
HDMI 2.1 (CEC, ARC, HDCP 2.3)	1x
HDMI 2.1 (CEC, HDCP 2.3)	2x
USB-C (full function)	1x supporting the following standards: USB 3.2 gen 1, video (displayport 1.2), audio, touch (USB 2.0), LAN (100Mb/s) and 100W power
VGA (1920 x 1080 @60 Hz)	1x
AV In (CVBS) (567i)	1x (3,5 mm Mini-Jack)
Audio In (VGA)	1x (3,5 mm Mini-Jack)
Headphone	1x (3,5 mm Mini-Jack)

Microphone In	1x (3,5 mm Mini-Jack)
Analogue Audio Output RCA	2x RCA female (L+R)
Digital audio output SPDIF	1x TOSLink optical
RS232 operation	1x DB9 Male
IP232 operation	Yes, via LAN
USB-B-Touch (USB 3.0)	2x
USB 2.0	1x (Central)
USB-A 3.2 Gen 1	3x (switchable Central / OPS)
LAN Port IN/OUT	2x (RJ45, 1000 Mb/s)
Including Wi-Fi	Yes, integrated Wi-Fi module
Wi-Fi Standard	802.11ax- Wi-Fi 6
Bluetooth Standard	5.2
Mini SD card reader	1x Max storage expansion of 128GB (FAT32)
PC module port	Yes, 80 pins OPS port

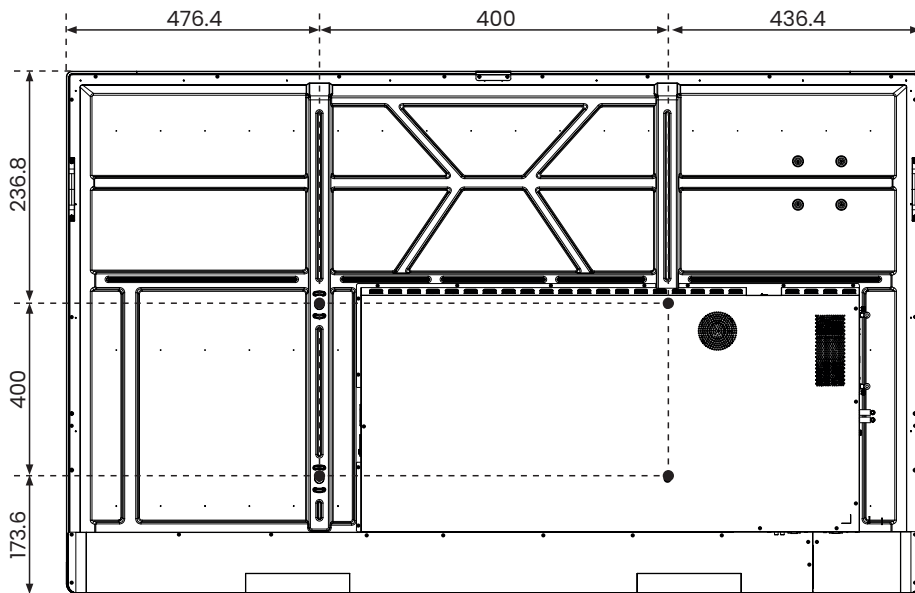
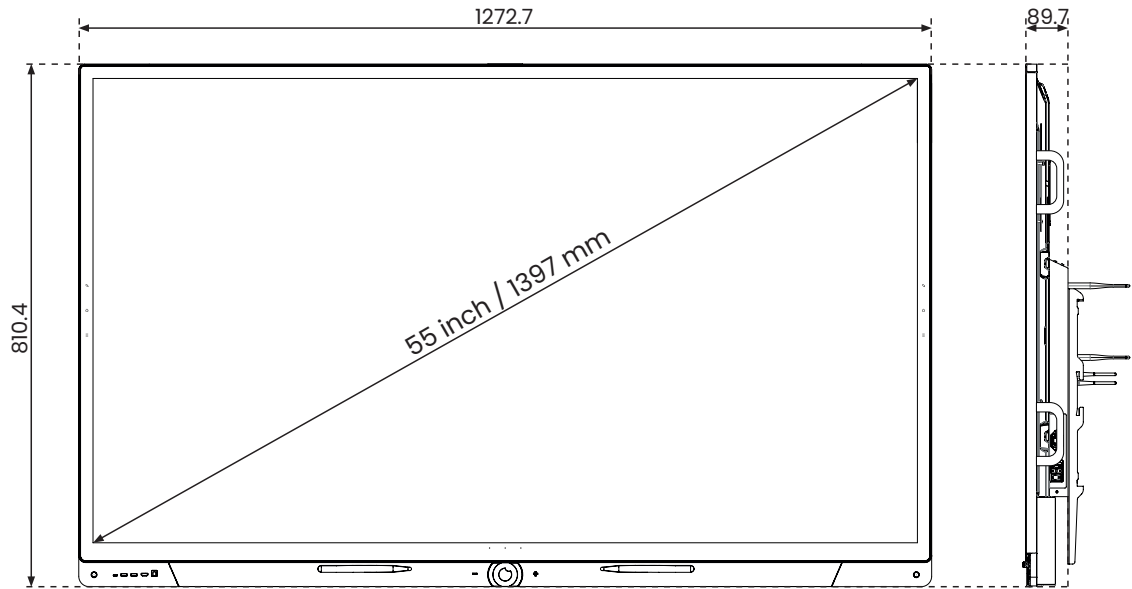
Connections FRONT	
USB-C (full function)	1x supporting the following standards: USB 3.2 gen 1, video (displayport 1.2), audio, touch (USB 2.0) and 15W power
HDMI 2.1 (CEC, HDCP 2.3)	1x
USB-B-TOUCH (USB 3.0)	1x
USB-A 3.2 gen 1	2x (switchable Central / OPS)

	55"	65"	75"	86"
General Information				
Power supply	~ 100-240 V (50/60Hz)			
Energy consumption - Energy saver	82 W	80 W	96 W	125 W
Energy consumption - Energy Star	95,6 W	107 W	130 W	160 W
Energy consumption - Dynamic	177,8 W	170 W	200 W	255 W

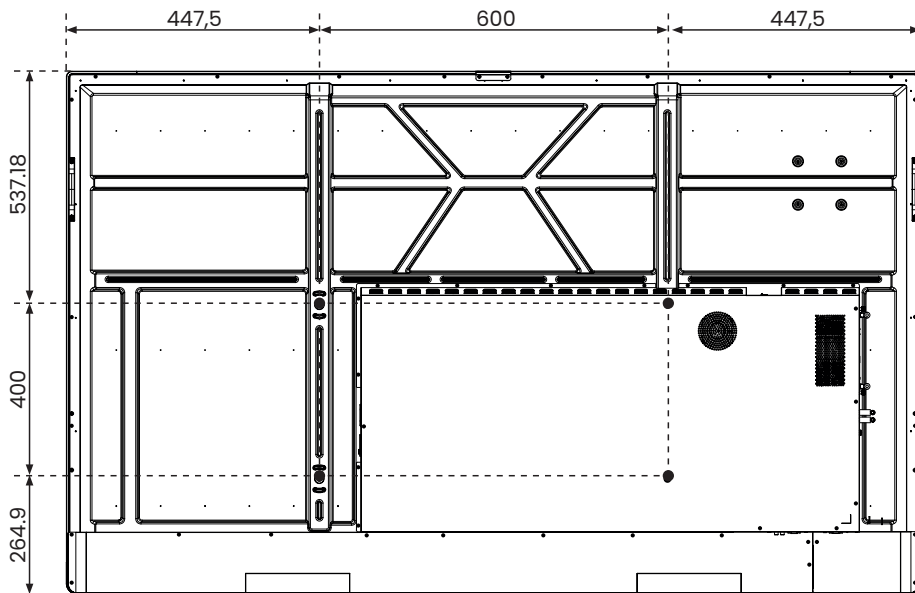
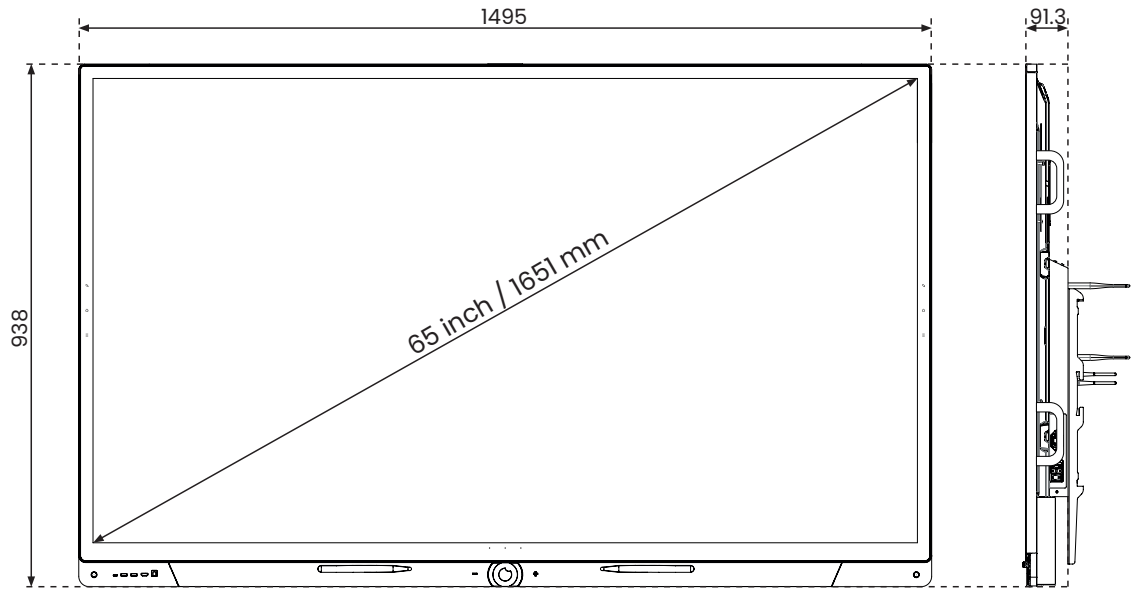
Stand-by energy consumption	≤ 0,5 Watt			
Gross weight	46,5 kg	53,95 KG	72,38 KG	91 KG
Net weight	37 kg	43.6 KG	58,02 KG	72.3 KG
Screen dimensions (WxHxD)	1272,7 x 810,4 x 89,8 mm	1495 x 938 x 91.3 mm	1716 x 1062.3 x 91.2 mm	1963.4 x 1202.2 x 91.2mm
Dimensions package (WxDxH)	1400 x 900 x 210 mm	1620 x 210 x 1030 mm	1880 x 210 x 1160 mm	2140 x 225 x 1285 mm
VESA standard	VESA 400 x 400 mm	VESA 600 x 400 mm	VESA 800 x 400 mm	VESA 800 x 400 mm
VESA mount for external devices (Integrated)	VESA 100 x 100 mm			
TÜV eye comfort certification	Yes , incl. blue light filter			
Certificats	CE: EMC + LVD / WEEE / RoHS / REACH / FCC-IC / cTUVus/ Ecodesign/ GS / Energy Star			
Warranty	7 years standard			

Environmental conditions	
Operating temperature	0 °C up to 38 °C / 32 up to 100 °F
Storage temperature	-20 °C up to 60 °C / -4 up to 140 °F
Storage Humidity	10% up to 90%
Usage Humidity	10% up to 90%

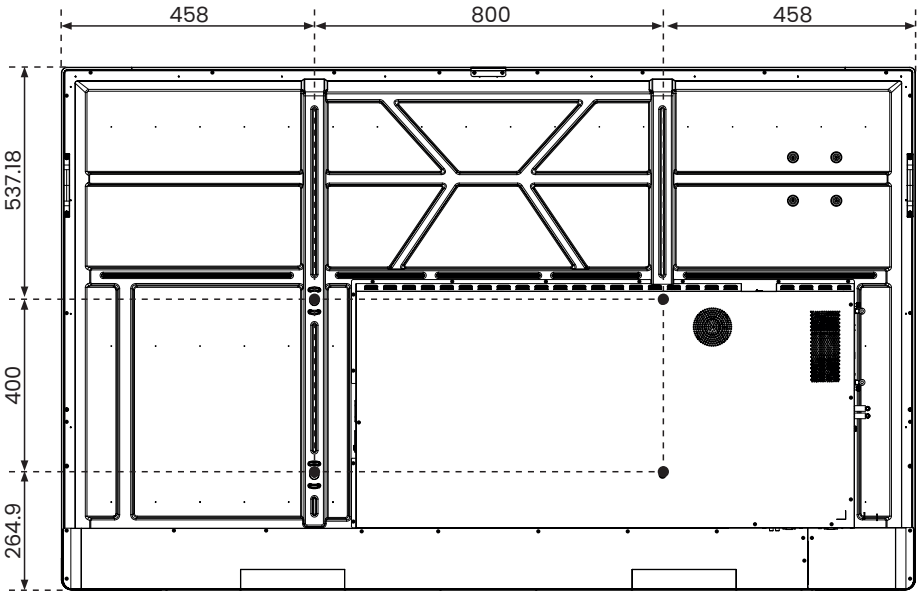
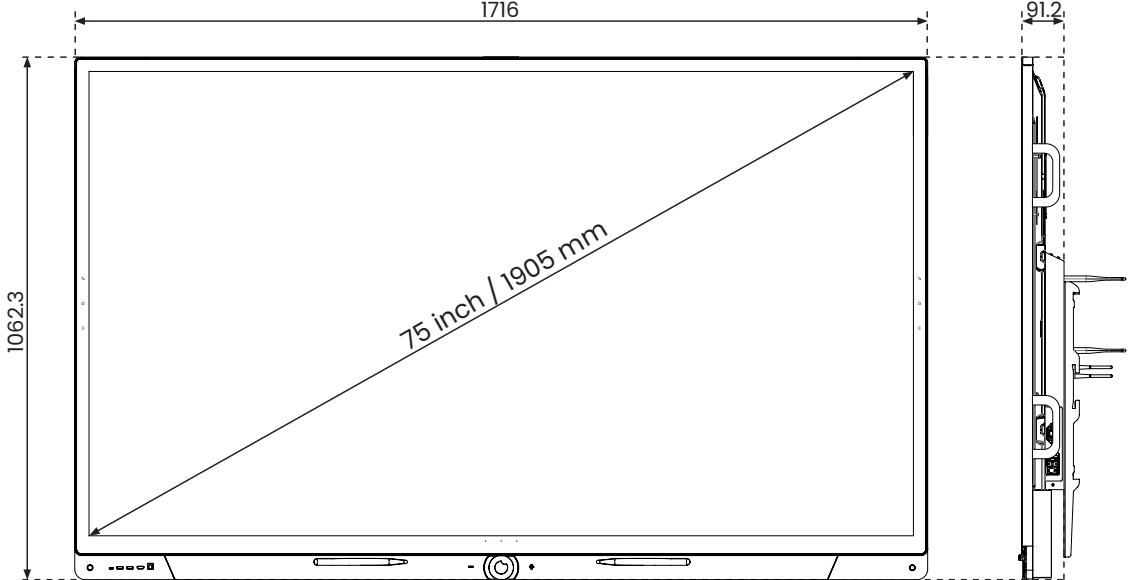
55 inch



65 inch



75 inch



86 inch

