

Manual Tilt, Fixed Height Fliptop Trolley – 8508/8509

-MaxCapacity 25kg -Screens32" - 42"

WARNING ! THIS IS NOT A TOY !

**WARNING ! CHILDREN SHOULD NOT OPERATE LIFT OR HAVE ACCESS TO THE
OPTIONAL REMOTE CONTROL !**

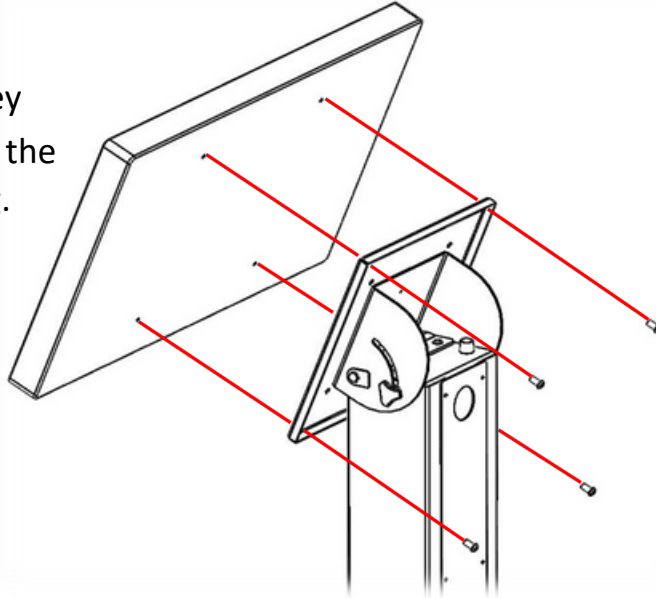
Safety instructions

Use the following safety guidelines to help protect your lift from potential damage and to ensure your own personal safety.

- Read all the installation instructions before testing or installing your trolley.
- The area below moving parts of the lift and screen **MUST** be kept clear of obstructions.
- Keep the optional remote control out of reach of children.
- To prevent bodily injury, keep hands and clothing away from the lift while the lift is in operation.
- Do not place the lift in places subject to extreme temperatures for example near a radiator, or heating vent.
- Unplug the lift **IMMEDIATELY** in the following conditions:
 - When the power cord or plug is damaged or frayed.
 - If liquid has spilled into the lift.
 - If the lift has been exposed to rain or water.
 - If the lift exhibits a distinct change in performance, indicating a need for servicing.
- **MANUFACTURERS** who build this Lift into other products or use it with other products, **MUST** make sure to prevent bodily injury. The **MANUFACTURER** is responsible to give the end user proper warnings and instructions for use.
- When adding a TV or any other equipment the party adding this TV or equipment is responsible for stability and security.
- The lift should only be used on a flat floor

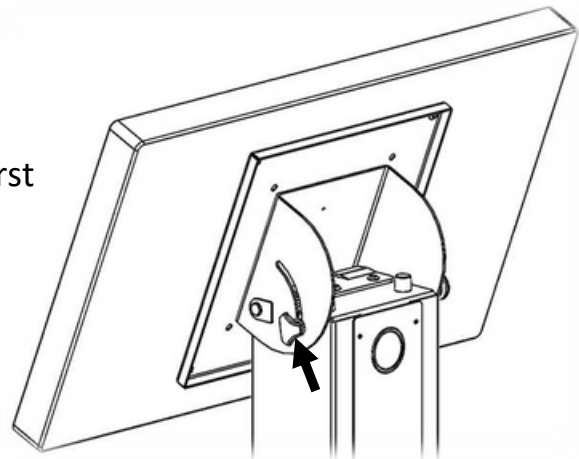
Mounting the Screen

1. The casters on the base of the trolley should be locked and the mount in the vertical position before proceeding. Bolt the screen to the mount plate using the appropriate fixings.

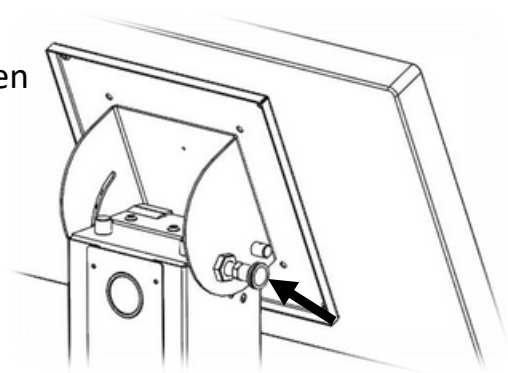


Operating the Trolley

1. The screen can be set in 4 different pre-set positions, to adjust the angle of the screen first loosen the thumb wheel a few turns.



2. Whilst holding the screen in one hand pull out the plunger pin with the other hand and move the screen into the desired position, when in position release the plunger pin and allow it to snap into place.



3. With the plunger in position the thumb wheel should now be tightened to prevent accidental movement of the tilt mechanism.