



a l l o f f i c e l t d



Immersive rooms

SEN (D)



SEN (D) simulation

Benefits of immersive spaces for SEN



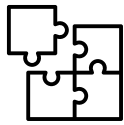
Enhanced Engagement and Attention:

The immersive and stimulating nature of these rooms captures the attention of students, promoting increased engagement in the learning process. For individuals with special needs, who may face challenges in traditional classroom settings, the dynamic and multi-sensory features of immersive rooms can make educational content more captivating and easier to comprehend.



Personalised Learning Experiences:

Immersive rooms in special education can be customised to accommodate diverse learning needs and styles. The interactive and multi-sensory nature of these environments allows educators to tailor content to individual students, providing personalised learning experiences that cater to their unique abilities, preferences, and challenges.



Sensory Integration and Regulation:

Immersive rooms provide a controlled space for sensory experiences, aiding in sensory integration and regulation for students with special needs. These environments can be designed to offer calming or stimulating sensory inputs, helping students develop self-regulation skills and creating a conducive atmosphere for learning.



Social Interaction & Communication Skills:

Immersive rooms can serve as a platform for fostering social interaction and communication skills. Through collaborative activities and group exercises in these immersive environments, students with special needs have opportunities to practice and enhance their social communication abilities in a supportive and engaging setting.



An immersive room holds significant potential for special education by providing a dynamic and inclusive learning environment. For students with special needs, these rooms offer tailored experiences that cater to diverse learning styles and abilities. The multi-sensory nature of immersive rooms can engage students on multiple levels, accommodating various learning preferences. Visual, auditory, and tactile stimuli can be carefully curated to support specific educational objectives, helping students grasp concepts in a more personalised and impactful way. Moreover, immersive rooms facilitate experiential learning, allowing students to explore and interact with educational content in a controlled yet immersive setting. This hands-on approach can be particularly beneficial for students with disabilities, providing a supportive space for skill development, social interaction, and sensory integration. Ultimately, immersive rooms in special education settings contribute to a more inclusive and effective learning environment, fostering individualized growth and a love for learning.

Why choose a immersive room?



360 Camera

Film your own or local scenarios to create compelling, customised simulations.



Interactive

Interactive, immersive scenarios that people can engage with through touch, sight, smell and sound.



Content Library

Thousands of in-built resources, easily integrate third party content, access content from the global community, or make your own.



High Quality Hardware

State-of-the-art projectors, audio and effects that help create a real-world experience.



Training and Ongoing Support

Our team will provide in-depth training and continuous support, giving you peace of mind every step of the way.



Easy Control

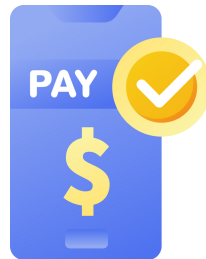
Our fully integrated system allows you to discover, create and launch content easily, resulting in a completely tailored experience for your students.

Pricing options?



Proforma payment

Receive a proforma invoice on our fixed terms of 30 days. This is based on a one off payment (price on our final quote)



One straight payment

This includes paying the full amount on our final quote. Invoice will be attached with the quote if requested.



Finance payments (monthly)

We are partnered with a trusted provider who offer monthly payments. Speak to our team about this option.

SEN group video

This video is about a special education group taking full advantage of what an immersive room has to offer. From sensory bubble popping to story time and even going into space!

[VIEW DEMO](#)

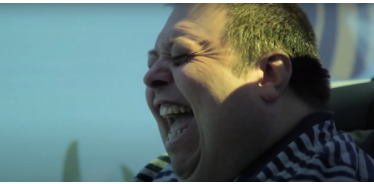
Twinkle house

Twinkle house are a wellness and sensory centre that help families to enter a tranquil space to relax, The immersive room is also used for sleep studies.

[VIEW DEMO](#)



Key advantages



Sensory Stimulation: Immersive rooms can offer a variety of sensory experiences, including visual stimuli, sounds, and tactile elements. This is especially beneficial for individuals with sensory processing disorders or those who require sensory stimulation for therapeutic purposes.

Interactive Learning Environments: Immersive rooms can be tailored to create interactive and engaging learning environments. Educational content can be presented in a multisensory manner, catering to different learning styles and abilities.

Virtual Field Trips: Individuals with mobility challenges or other disabilities may find it difficult to participate in traditional field trips. Immersive rooms can simulate virtual field trips, allowing everyone to explore and experience different environments and cultures.

Social Skills Development: Immersive environments can be used for social skills development. Virtual scenarios can be created to practice social interactions, communication, and appropriate behaviors in a safe and controlled setting.

Cognitive Stimulation and Therapy: Immersive rooms can provide cognitive stimulation and therapy for individuals with cognitive disabilities. Customized activities and simulations can target specific cognitive skills, such as memory, attention, and problem-solving.

Motor Skills Development: Interactive games and activities in immersive rooms can be designed to promote the development of motor skills. This is particularly useful for individuals with physical disabilities who may benefit from activities that encourage movement and coordination.

Virtual Reality Therapy (VRT): Virtual reality therapy can be employed for individuals with certain mental health conditions or anxiety disorders. Immersive environments can offer exposure therapy, relaxation experiences, and mindfulness exercises in a controlled and supportive setting.

Customizable Accessibility Features: Immersive rooms can be equipped with customizable accessibility features, such as adjustable interfaces, voice commands, and other assistive technologies. This ensures that individuals with different abilities can comfortably interact with the immersive content.

Personalized Learning Experiences: Immersive rooms allow for personalized learning experiences based on individual needs and preferences. Content can be adapted to suit different cognitive levels, attention spans, and sensory sensitivities.

Emotional Regulation and Well-being: Immersive environments can be designed to promote emotional regulation and well-being. Therapeutic content, relaxation exercises, and mindfulness activities can contribute to emotional well-being for individuals with SEN and disabilities.

Life Skills Training: Immersive rooms can simulate real-world scenarios for life skills training. Individuals can practice activities such as grocery shopping, using public transportation, and cooking in a safe and controlled virtual environment.

Communication Support: Immersive rooms can support individuals with communication difficulties. Augmented reality interfaces and interactive communication tools can assist in developing and practicing communication skills.

We offer a full cost breakdown included in a quote, Finance options available and free demonstration before purchase as well on going support after purchase & hassle free installation! We only need dimensions and pictures of the room you'd like to use then you sit back and relax through the process!



a l l o f f i c e l t d



0151 372 7766



info@allofficeltd.com



www.futurevisuals.co.uk